



Day 1

REALLOCATE Twinning Visit Bologna



REALLOCATE

REALLOCATE

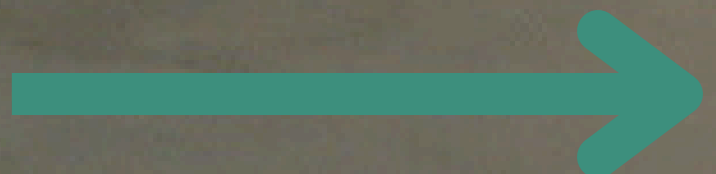
Neutral, safe and sustainable school district
along the Knowledge Path

ANNA LISA BONI,
DEPUTY MAYOR OF
BOLOGNA

“

Bologna's path to climate neutrality is about transforming how we work as a city, integrating mobility, energy, and culture, and engaging citizens in the process.

”



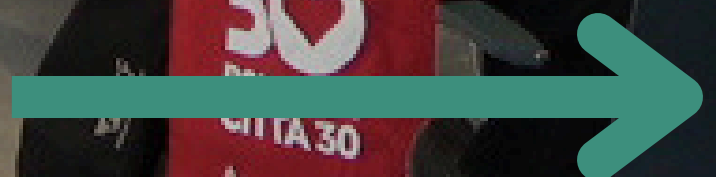


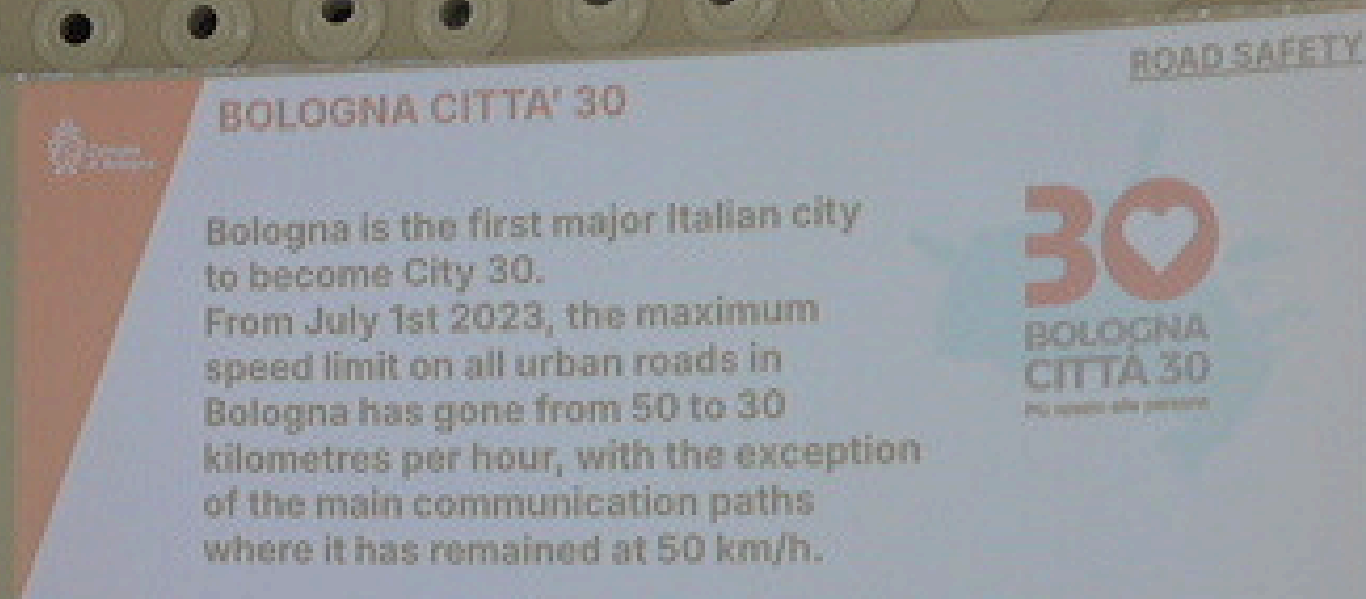
WHAT IS REALLOCATE'S ROLE?

“

Through collaboration with local schools, associations, and citizens, we're bringing natural-based solutions to life in urban areas, creating vibrant spaces for all.

”



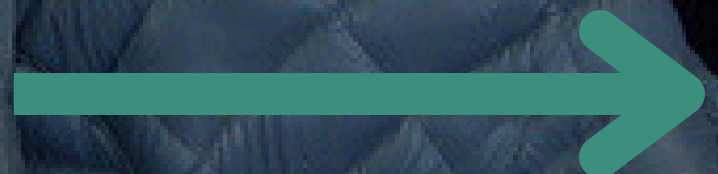


Bologna accessibility planning & gender policies

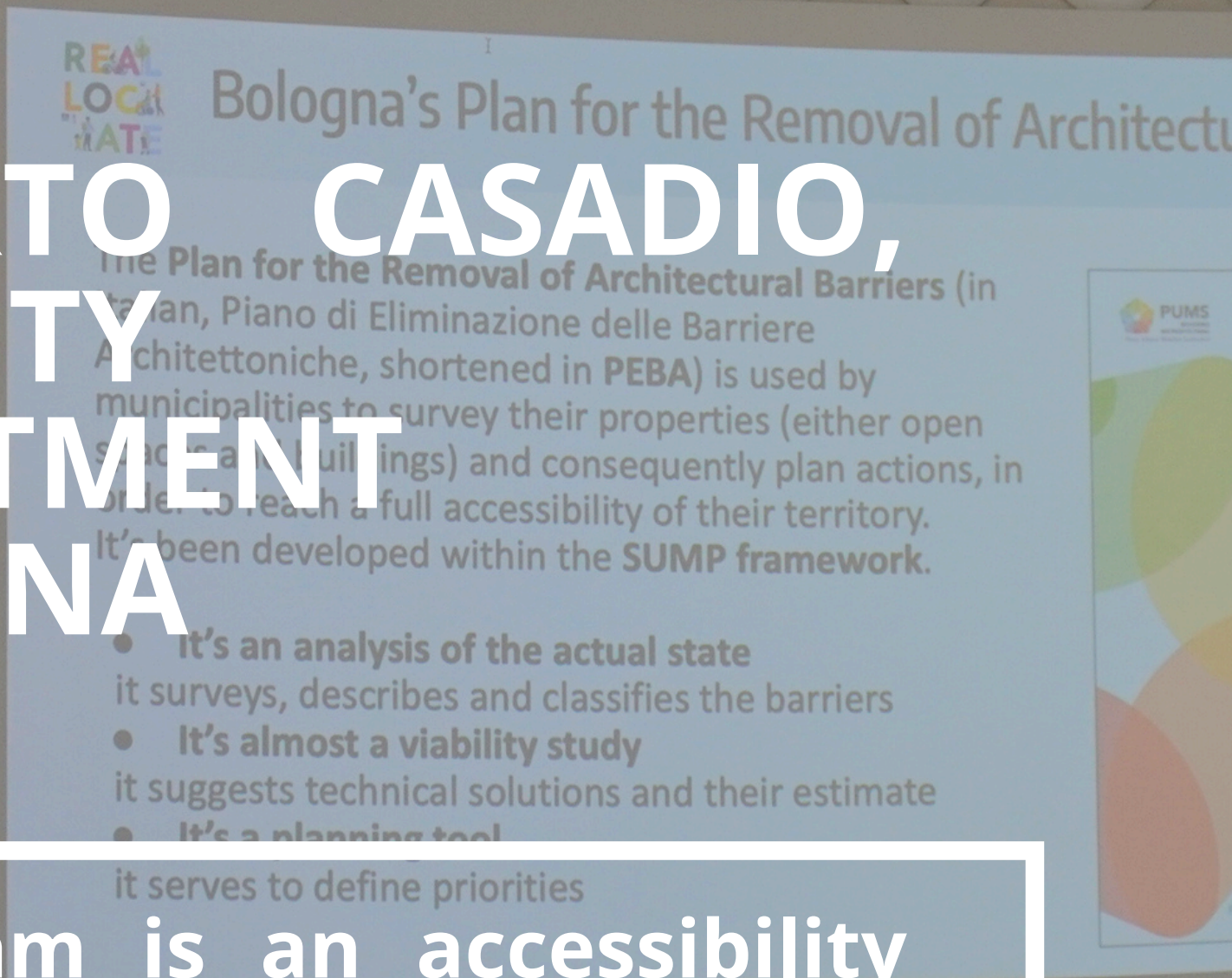
Demolition of Architectural barriers

Creating a 'Gender Atlas'

**Featuring Barcelona's accessibility plan &
gender mainstreaming**



UMBERTO CASADIO, MOBILITY DEPARTMENT BOLOGNA



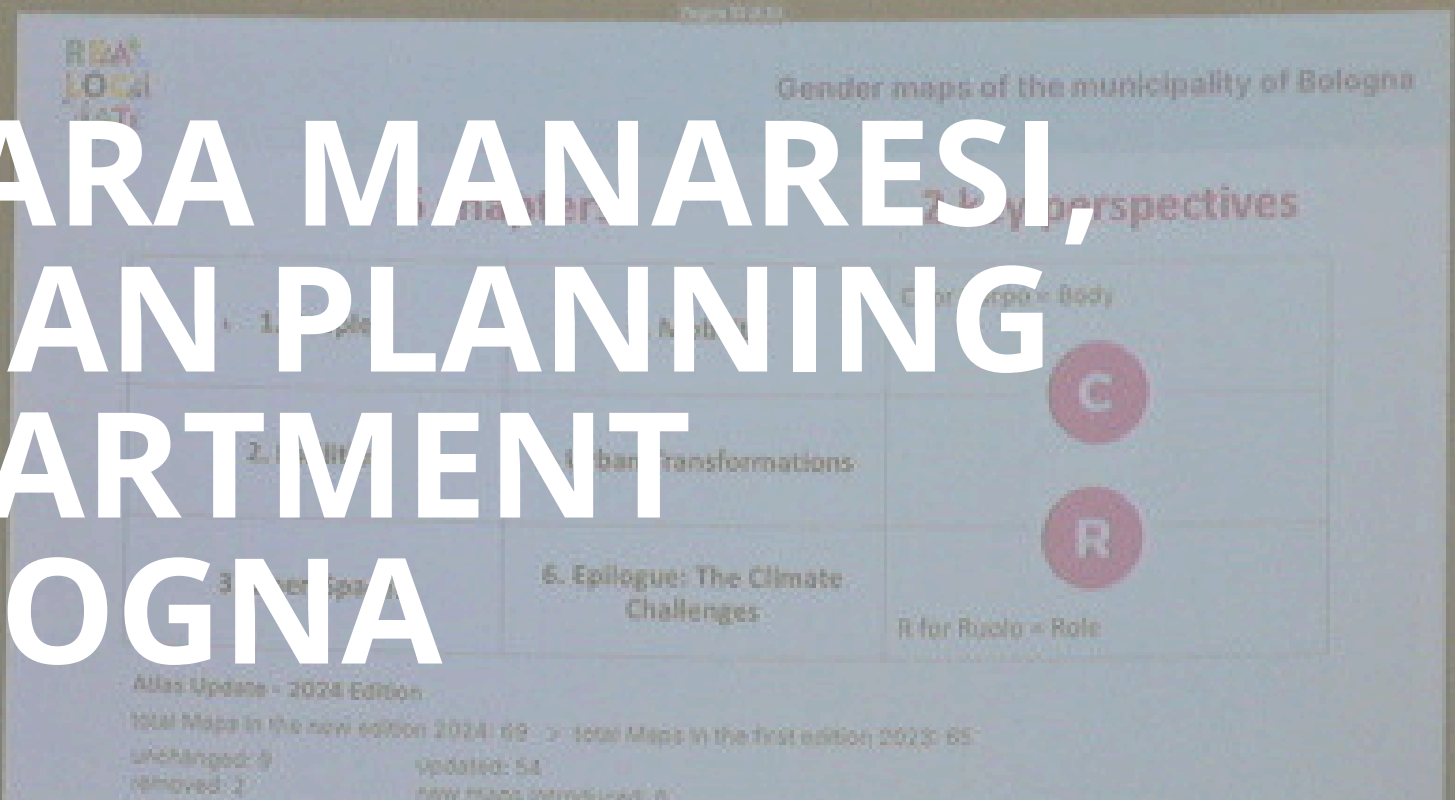
“

The tram is an accessibility enhancer – allowing people with disabilities to move from the outskirts to the city center with ease

”



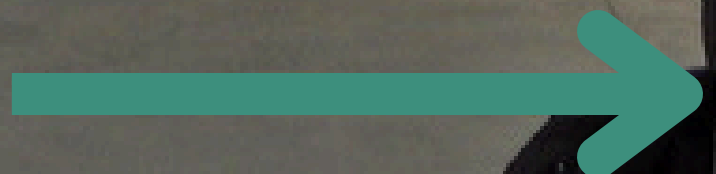
CHIARA MANARES, URBAN PLANNING DEPARTMENT BOLOGNA



“

City spaces must be designed through the gaze of a woman and of the most vulnerable populations, and they must respond to their needs.

”

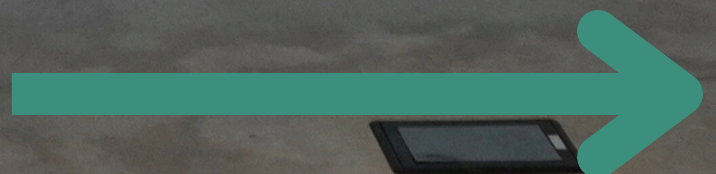




LAURA TRUJILLO, BARCELONA CITY COUNCIL



Barcelona has been committed to integrating accessibility into all city departments and ensuring that people with disabilities are empowered through inclusive urban planning



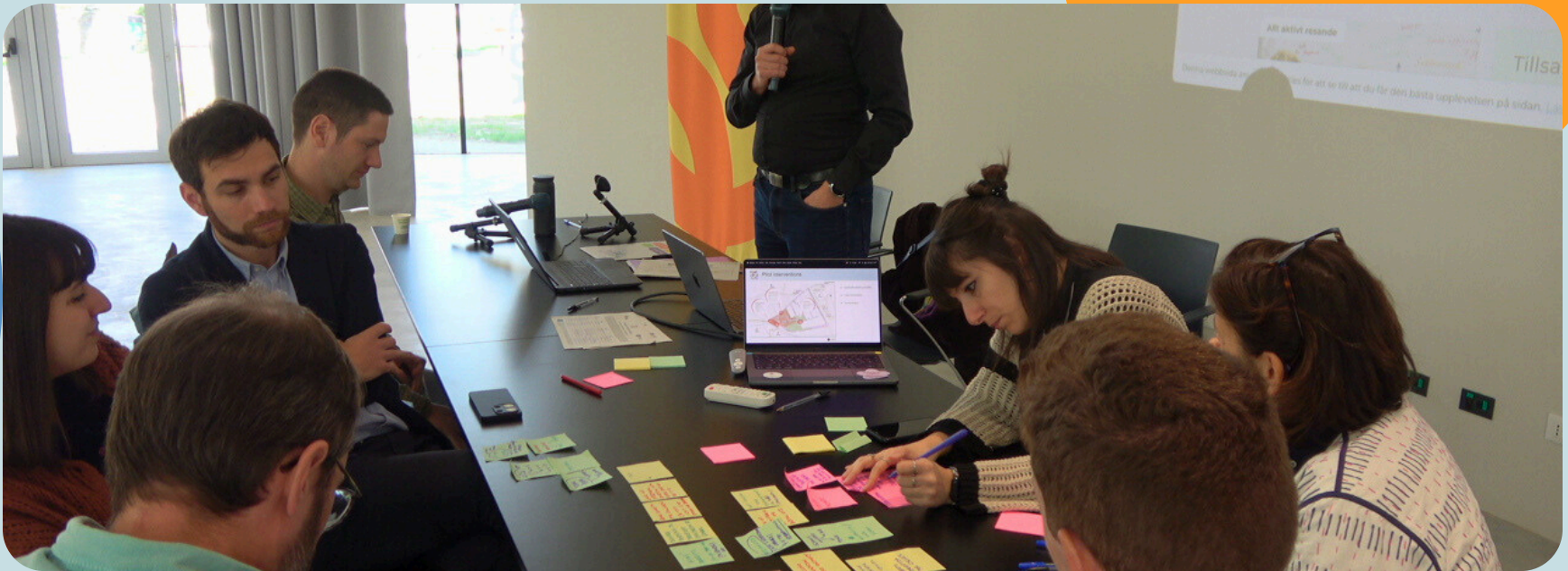
Day 1

Workshop highlights

**Alternative transport planning -
IMPD**

**Fostering behavioural change -
NUDGD**





What are the biggest accessibility challenges your city faces?

